

Abfertigungsbeträge

2024

	W, NÖ	§37 BUAG*	OÖ	St	K	B	S	T	V	Ö
Jänner	4.102.973,71	4.051.685,12	217.346,10	727.209,06	571.533,72	67.081,38	393.232,62	536.171,25	0,00	10.667.232,96
Februar	3.031.557,69	20.078.825,45	328.396,20	737.189,79	398.025,35	38.407,32	261.840,96	338.952,24	0,00	25.213.195,00
März	2.573.102,68	27.739.623,80	451.728,21	495.294,55	268.041,33	220.256,82	246.120,00	436.812,37	206.389,68	32.637.369,44
April	2.983.415,10	15.829.993,07	248.599,18	594.503,16	511.361,94	255.563,76	126.822,06	328.019,04	95.321,07	20.973.598,38
Mai	2.433.946,08	8.694.765,97	260.809,23	422.019,72	299.273,52	378.392,82	131.183,82	409.595,79	22.054,92	13.052.041,87
Juni	3.145.183,95	1.507.097,39	495.829,82	720.249,75	320.618,18	284.150,31	122.654,16	181.697,76	23.136,30	6.800.617,62
Juli	6.916.353,37	1.320.821,52	829.879,32	1.591.766,73	1.461.376,79	867.522,53	471.717,44	683.444,49	155.478,48	14.298.360,67
August	8.241.393,87	920.235,81	684.830,69	2.079.588,42	575.028,06	487.502,50	629.241,18	681.135,60	0,00	14.298.956,13
September	7.260.307,46	1.442.818,59	938.987,70	1.831.246,92	1.554.063,56	476.839,30	556.068,90	812.265,42	282.973,32	15.155.571,17
Oktober	4.414.674,24	1.375.399,02	508.689,63	1.378.354,22	852.604,08	276.089,96	594.545,52	555.472,77	266.433,90	10.222.263,34
November										
Dezember										
2024	45.102.908,15	82.961.265,74	4.965.096,08	10.577.422,32	6.811.926,53	3.351.806,70	3.533.426,66	4.963.566,73	1.051.787,67	163.319.206,58

2023

	W, NÖ	§37 BUAG*	OÖ	St	K	B	S	T	V	Ö
Jänner	5.751.323,86	1.584.752,79	424.211,56	593.194,26	613.190,52	319.038,12	206.133,38	315.412,41	169.102,68	9.976.359,58
Februar	2.541.623,50	19.990.478,09	344.096,02	593.090,38	441.932,84	156.801,03	338.552,08	723.035,46	170.375,23	25.299.984,63
März	3.594.276,45	33.911.459,53	490.137,39	423.759,57	368.848,53	95.550,48	295.126,65	288.217,56	201.767,04	39.669.143,20
April	2.271.849,58	5.479.302,25	302.619,93	394.428,36	230.504,06	132.057,90	70.491,24	206.955,57	121.358,97	9.209.567,86
Mai	4.363.084,85	2.681.161,82	370.075,89	476.086,45	293.860,32	0,00	150.515,22	287.804,49	56.933,16	8.679.522,20
Juni	3.294.466,29	1.659.649,22	192.972,44	445.063,14	311.368,30	14.767,44	175.906,74	122.544,11	85.728,84	6.302.466,52
Juli	5.868.165,34	1.352.036,28	722.555,31	1.483.407,24	1.431.626,46	351.012,18	296.641,83	679.188,51	133.985,22	12.318.618,37
August	6.703.394,14	956.922,73	669.971,03	2.665.983,94	589.094,94	856.002,77	360.378,78	655.534,53	152.687,88	13.609.970,74
September	7.376.690,42	999.870,02	806.159,84	981.187,97	962.811,09	331.939,98	935.083,35	900.645,87	231.450,84	13.525.839,38
Oktober	4.744.272,55	437.705,80	405.708,33	1.182.499,26	597.332,54	335.660,43	160.599,17	441.870,93	161.728,20	8.467.377,21
November	4.023.637,28	715.499,07	405.192,58	888.911,28	344.128,21	197.954,16	246.439,20	586.463,76	108.022,78	7.516.248,32
Dezember	3.180.159,31	1.198.256,32	487.777,59	768.213,92	354.168,36	105.205,20	296.285,00	294.282,33	80.552,94	6.764.900,97
2023	53.712.943,57	70.967.093,92	5.621.477,91	10.895.825,77	6.538.866,17	2.895.989,69	3.532.152,64	5.501.955,53	1.673.693,78	161.339.998,98

Abfertigungsbeträge

2022

	W, NÖ	§37 BUAG*	OÖ	St	K	B	S	T	V	Ö
Jänner	4.814.562,64		468.637,28	853.116,03	463.773,81	195.719,16	240.119,59	214.823,43	393.458,89	7.644.210,83
Februar	2.779.821,19		386.266,17	955.610,16	372.584,49	130.553,19	192.543,72	510.708,69	47.088,24	5.375.175,85
März	3.517.999,07		519.629,64	524.925,03	255.480,30	325.335,18	229.915,83	394.565,98	65.374,92	5.833.225,95
April	2.914.800,55		136.012,02	379.970,39	306.771,19	137.905,32	117.165,52	383.029,23	93.063,12	4.468.717,34
Mai	3.175.318,81		224.256,00	457.056,78	329.377,44	159.389,16	112.360,44	300.773,20	74.822,82	4.833.354,65
Juni	2.317.185,49		369.729,42	510.235,37	136.724,89	39.835,53	140.280,48	267.852,33	46.489,38	3.828.332,89
Juli	4.845.167,19		366.060,82	1.541.394,44	478.755,09	455.615,54	99.799,44	737.157,96	45.112,56	8.569.063,04
August	6.679.473,82		1.122.519,30	2.353.078,40	444.535,38	594.115,64	509.479,32	777.672,57	622.771,80	13.103.646,23
September	4.828.661,77	832.664,46	1.537.093,46	1.486.048,37	750.896,16	283.391,97	258.349,95	489.248,52	210.839,04	10.677.193,70
Oktober	5.297.486,02	671.103,97	794.274,69	1.036.683,04	477.688,28	176.355,96	404.640,52	538.249,08	236.581,83	9.633.063,39
November	4.489.072,32	481.469,19	716.032,71	1.296.508,08	688.334,55	513.515,83	137.632,86	516.736,38	237.195,41	9.076.497,33
Dezember	3.728.725,87	1.176.142,25	370.244,79	890.718,54	468.657,93	181.088,40	149.420,19	321.480,87	128.308,98	7.414.787,82
2022	49.388.274,74	3.161.379,87	7.010.756,30	12.285.344,63	5.173.579,51	3.192.820,88	2.591.707,86	5.452.298,24	2.201.106,99	90.457.269,02

2021

	W, NÖ	OÖ	St	K	B	S	T	V	Ö
Jänner	4.138.858,36	230.452,25	656.415,84	600.732,22	298.854,48	164.167,98	550.824,93	84.665,40	6.724.971,46
Februar	3.168.318,98	396.709,95	534.218,01	406.848,77	174.792,30	174.888,12	163.042,89	107.831,43	5.126.650,45
März	3.697.835,00	455.762,79	448.183,38	516.969,38	126.408,38	159.127,80	768.504,11	193.332,09	6.366.122,93
April	2.206.598,16	368.852,18	394.861,74	422.122,14	13.033,64	135.067,32	221.923,48	44.885,68	3.807.344,34
Mai	2.779.977,07	227.445,56	685.650,00	300.283,97	71.926,68	31.830,30	156.243,96	167.325,02	4.420.682,56
Juni	2.641.043,06	335.369,01	534.113,33	340.781,96	33.154,56	130.210,56	268.781,49	20.220,96	4.303.674,93
Juli	4.230.767,90	960.313,92	977.482,71	869.397,45	353.959,74	234.613,38	252.525,96	258.141,36	8.137.202,42
August	5.260.794,83	826.024,21	1.706.281,42	997.788,56	588.899,52	342.937,98	783.908,28	54.292,22	10.560.927,02
September	5.399.279,25	584.930,52	1.151.061,66	1.064.008,08	184.641,76	431.269,56	637.976,89	8.256,99	9.461.424,71
Oktober	4.281.257,82	364.558,57	1.055.596,16	741.377,57	352.217,70	0,00	498.482,45	135.209,84	7.428.700,11
November	5.111.782,19	209.069,16	1.009.863,79	465.461,56	277.898,22	375.654,30	575.791,86	245.756,45	8.271.277,53
Dezember	4.205.755,76	444.487,65	570.590,37	559.446,57	389.585,04	406.743,57	246.544,80	119.687,95	6.942.841,71
2021	47.122.268,38	5.403.975,77	9.724.318,41	7.285.218,23	2.865.372,02	2.586.510,87	5.124.551,10	1.439.605,39	81.551.820,17

Abfertigungsbeträge

2020

	W, NÖ	OÖ	St	K	B	S	T	V	Ö
Jänner	3.705.711,04	450.791,50	905.780,00	861.919,16	313.329,17	392.214,27	423.145,00	146.049,90	7.198.940,04
Februar	2.996.936,92	558.659,75	976.337,43	191.976,06	102.147,28	256.085,97	248.380,44	136.788,60	5.467.312,45
März	2.642.459,64	163.341,03	682.246,95	221.264,95	184.725,88	69.246,51	245.246,31	60.555,18	4.269.086,45
April	2.492.239,92	91.815,37	322.601,43	279.771,37	82.518,48	123.867,51	170.571,66	178.967,52	3.742.353,26
Mai	2.363.263,47	187.594,62	248.618,60	456.635,43	43.127,40	123.834,14	325.798,71	171.643,44	3.920.515,81
Juni	2.708.480,78	203.311,86	331.076,87	150.288,36	423.193,59	112.938,48	229.280,19	106.534,23	4.265.104,36
Juli	4.442.654,97	593.894,88	1.557.737,25	730.009,47	713.457,84	485.448,72	454.315,77	202.054,44	9.179.573,34
August	5.188.243,14	494.984,83	1.635.189,42	1.229.901,12	261.495,72	489.292,45	328.517,02	189.497,88	9.817.121,58
September	10.924.151,14	1.006.758,04	1.277.886,32	1.227.347,60	460.483,63	525.210,13	585.446,64	73.153,47	16.080.436,97
Oktober	4.423.055,29	711.441,54	1.145.007,51	748.843,17	215.920,56	390.595,50	417.084,91	211.322,31	8.263.270,79
November	3.672.294,08	649.113,18	563.781,54	450.918,20	234.147,96	358.406,88	317.053,53	204.960,81	6.450.676,18
Dezember	3.949.897,88	301.729,32	797.613,54	290.684,93	144.604,14	277.022,02	260.219,10	44.180,76	6.065.951,69
2020	49.509.388,27	5.413.435,92	10.443.876,86	6.839.559,82	3.179.151,65	3.604.162,58	4.005.059,28	1.725.708,54	84.720.342,92

2019

	W, NÖ	OÖ	St	K	T	V	Ö
Jänner	4.557.503,44	471.913,59	981.036,52	789.077,08	352.720,57	106.420,17	7.258.671,37
Februar	3.796.123,31	230.873,91	719.925,90	370.298,65	282.120,99	98.329,40	5.497.672,16
März	2.321.457,38	371.420,04	715.387,96	431.948,08	371.791,75	308.625,23	4.520.630,44
April	2.187.892,17	308.032,66	869.191,04	348.082,51	222.166,74	315.786,36	4.251.151,48
Mai	2.519.480,70	767.985,45	740.241,35	394.344,89	179.810,28	200.905,31	4.802.767,98
Juni	2.553.620,57	412.131,21	299.557,02	225.280,26	184.323,32	147.098,34	3.822.010,72
Juli	4.707.564,12	367.742,99	1.517.269,04	922.250,07	224.117,34	86.199,06	7.825.142,62
August	2.736.350,00	862.204,74	1.447.177,38	496.686,24	449.658,80	110.710,32	6.102.787,48
September	5.466.038,37	389.576,16	1.396.620,95	646.981,98	260.753,88	358.308,90	8.518.280,24
Oktober	4.831.664,59	1.038.895,17	1.253.380,54	1.091.988,83	480.145,11	134.270,91	8.830.345,15
November	4.078.884,10	533.214,00	964.418,19	717.540,21	165.996,15	277.482,84	6.737.535,49
Dezember	5.006.454,94	646.772,72	1.122.363,27	559.169,00	161.123,49	195.658,38	7.691.541,80
2019	44.763.033,69	6.400.762,64	12.026.569,16	6.993.647,80	3.334.728,42	2.339.795,22	75.858.536,93

Abfertigungsbeträge

2018

	W, NÖ	OÖ	St	K	T	V	Ö
Jänner	5.141.273,69	335.228,39	1.221.130,74	724.020,33	273.537,13	139.519,29	7.834.709,57
Februar	3.166.756,49	402.828,80	1.094.750,71	508.596,82	166.624,18	151.967,28	5.491.524,28
März	2.302.907,36	196.703,51	977.190,77	564.943,34	278.798,46	78.471,00	4.399.014,44
April	2.209.618,88	250.039,56	493.277,03	399.996,61	259.764,66	162.872,31	3.775.569,05
Mai	2.545.869,27	179.133,57	482.607,19	410.716,58	198.582,17	37.812,42	3.854.721,20
Juni	3.721.062,29	407.292,99	713.291,04	687.850,90	117.412,52	85.115,73	5.732.025,47
Juli	4.142.512,39	539.157,40	1.690.460,22	1.096.359,84	354.427,77	82.854,30	7.905.771,92
August	5.649.491,93	475.985,87	1.531.771,25	1.029.573,18	392.013,76	213.634,10	9.292.470,09
September	4.697.233,79	420.124,01	1.419.740,93	1.075.743,50	514.978,52	277.770,74	8.405.591,49
Oktober	5.078.728,44	710.095,86	1.076.016,48	875.147,48	504.934,23	234.011,49	8.478.933,98
November	3.806.886,59	515.575,81	1.384.105,25	765.681,54	217.085,60	172.959,13	6.862.293,92
Dezember	3.730.794,62	163.685,28	609.128,85	594.078,62	241.948,99	112.158,68	5.451.795,04
2018	46.193.135,74	4.595.851,05	12.693.470,46	8.732.708,74	3.520.107,99	1.749.146,47	77.484.420,45

2017

	W, NÖ	OÖ	St	K	T	V	Ö
Jänner	4.522.295,77	389.654,67	715.133,08	766.239,80	383.238,35	247.462,08	7.024.023,75
Februar	3.437.239,17	303.193,31	544.360,11	419.295,53	344.604,95	148.484,95	5.197.178,02
März	3.449.472,07	398.200,96	525.522,63	377.577,16	339.285,63	149.433,30	5.239.491,75
April	2.256.702,77	266.673,57	302.377,22	240.208,55	85.851,14	58.104,90	3.209.918,15
Mai	2.632.397,39	321.697,06	587.676,77	281.275,80	171.629,95	134.539,12	4.129.216,09
Juni	2.017.647,67	65.230,86	314.599,02	440.799,12	97.152,85	292.182,60	3.227.612,12
Juli	4.793.698,65	407.859,73	833.441,94	992.042,15	268.839,79	151.192,74	7.447.075,00
August	5.340.813,72	568.026,22	832.188,73	1.030.517,83	444.581,03	0,00	8.216.127,53
September	4.233.176,21	563.871,15	819.156,67	799.788,98	419.398,53	72.113,40	6.907.504,94
Oktober	4.789.715,31	343.546,15	1.500.319,99	710.362,40	281.935,95	194.625,54	7.820.505,34
November	3.410.389,89	347.460,66	1.117.608,24	522.874,18	161.789,04	50.443,00	5.610.565,01
Dezember	3.522.375,42	293.760,48	937.389,95	608.789,74	266.672,57	117.193,02	5.746.181,18
2017	44.405.924,04	4.269.174,82	9.029.774,35	7.189.771,24	3.264.979,78	1.615.774,65	69.775.398,88

Abfertigungsbeträge

2016

	W, NÖ	OÖ	St	K	T	V	Ö
Jänner	5.043.606,86	436.964,46	535.581,57	792.364,75	600.589,15	296.739,66	7.705.846,45
Februar	4.206.106,11	368.288,15	417.631,80	641.764,04	556.059,98	200.108,13	6.389.958,21
März	3.512.750,12	306.556,29	396.960,91	495.596,95	268.071,70	95.830,01	5.075.765,98
April	2.470.437,69	296.018,97	237.555,48	297.118,49	242.584,94	232.613,94	3.776.329,51
Mai	2.914.170,97	295.556,91	318.434,12	414.491,51	62.316,99	91.213,48	4.096.183,98
Juni	3.199.790,31	113.946,03	497.115,72	260.146,32	287.198,63	130.189,65	4.488.386,66
Juli	3.982.425,57	275.872,74	616.691,96	488.260,85	260.870,65	198.109,80	5.822.231,57
August	5.018.117,11	343.784,31	662.202,77	669.315,56	413.309,35	148.027,35	7.254.756,45
September	4.428.758,19	354.580,67	711.881,02	656.322,04	155.777,01	179.341,48	6.486.660,41
Oktober	3.294.419,15	164.927,58	615.363,81	331.294,10	191.031,78	78.555,84	4.675.592,26
November	4.385.384,91	353.303,01	624.805,38	1.040.980,51	281.433,57	86.426,97	6.772.334,35
Dezember	4.573.585,37	256.979,22	768.027,32	525.775,14	339.526,29	117.259,04	6.581.152,38
2016	47.029.552,36	3.566.778,34	6.402.251,86	6.613.430,26	3.658.770,04	1.854.415,35	69.125.198,21

2015

	W, NÖ	OÖ	St	K	T	V	Ö
Jänner	6.922.776,85	381.489,18	448.668,43	559.264,37	336.934,42	319.092,46	8.968.225,71
Februar	3.981.121,93	644.740,36	496.218,50	444.698,17	446.873,38	182.313,49	6.195.965,83
März	4.442.586,97	491.945,04	507.174,25	328.511,77	428.457,30	113.525,19	6.312.200,52
April	1.980.440,32	130.029,90	319.637,52	312.803,14	303.781,02	174.270,40	3.220.962,30
Mai	2.222.959,83	220.340,11	245.699,29	423.606,35	203.770,95	135.491,92	3.451.868,45
Juni	4.178.602,31	312.649,14	522.627,78	393.353,20	300.142,03	50.709,00	5.758.083,46
Juli	3.784.888,95	343.303,49	540.657,63	521.963,22	396.501,36	133.419,51	5.720.734,16
August	4.030.643,05	336.387,91	469.621,82	373.258,77	244.275,94	314.848,45	5.769.035,94
September	4.593.594,96	396.272,83	329.016,38	545.642,32	332.769,72	160.718,12	6.358.014,33
Oktober	3.083.676,56	212.163,06	485.923,88	452.825,04	173.857,20	112.408,99	4.520.854,73
November	3.455.493,31	476.917,78	470.824,68	425.514,46	173.797,21	45.534,82	5.048.082,26
Dezember	4.681.246,99	380.977,41	823.101,21	503.233,23	278.550,58	163.438,70	6.830.548,12
2015	47.358.032,03	4.327.216,21	5.659.171,37	5.284.674,04	3.619.711,11	1.905.771,05	68.154.575,81

Abfertigungsbeträge

2014

	W, NÖ	OÖ	St	K	T	V	Ö
Jänner	7.010.210,69	865.916,10	1.355.826,11	720.933,92	246.113,31	188.157,42	10.387.157,55
Februar	4.223.639,49	601.548,83	1.320.972,78	613.732,94	475.167,42	173.419,84	7.408.481,30
März	4.855.724,44	516.539,05	851.171,79	524.472,98	322.780,86	247.326,76	7.318.015,88
April	3.384.897,40	688.132,38	436.159,54	389.389,21	330.950,72	288.835,42	5.518.364,67
Mai	2.827.547,49	397.093,87	423.225,66	300.384,45	319.677,10	226.892,43	4.494.821,00
Juni	4.050.548,83	387.095,74	466.759,75	378.997,14	234.100,54	159.116,12	5.676.618,12
Juli	5.473.713,80	621.152,28	452.292,34	438.331,91	296.733,70	173.757,28	7.455.981,31
August	4.029.854,88	402.304,36	502.344,33	389.335,76	67.364,92	39.579,66	5.430.783,91
September	4.543.689,10	386.550,65	567.259,71	532.198,05	214.050,00	351.234,29	6.594.981,80
Oktober	3.947.269,14	586.230,99	659.476,51	612.848,24	220.379,60	75.474,86	6.101.679,34
November	3.899.425,28	294.111,60	227.601,19	365.728,13	115.587,88	151.800,07	5.054.254,15
Dezember	5.730.136,71	361.458,22	876.573,29	477.766,79	248.914,30	100.391,14	7.795.240,45
2014	53.976.657,25	6.108.134,07	8.139.663,00	5.744.119,52	3.091.820,35	2.175.985,29	79.236.379,48

2013

	W, NÖ	OÖ	St	K	T	V	Ö
Jänner	7.221.387,03	812.583,66	1.149.306,57	539.956,34	410.322,31	321.364,76	10.454.920,67
Februar	4.118.645,46	516.183,28	874.556,84	428.458,10	128.451,99	97.773,91	6.164.069,58
März	3.503.997,86	713.071,63	805.510,19	717.072,44	290.555,21	107.372,59	6.137.579,92
April	3.870.767,93	453.407,29	532.519,35	596.381,64	420.865,66	81.431,59	5.955.373,46
Mai	3.003.767,49	380.864,34	907.625,61	229.789,55	252.975,77	217.139,38	4.992.162,14
Juni	3.337.138,95	512.416,08	459.028,49	271.135,65	295.668,98	139.642,29	5.015.030,44
Juli	5.277.829,93	698.782,64	679.529,83	543.716,97	189.086,89	134.191,72	7.523.137,98
August	4.285.190,38	673.586,63	345.249,97	476.428,72	274.381,84	139.632,32	6.194.469,86
September	4.036.899,84	547.768,52	554.277,12	403.503,74	188.380,14	129.755,16	5.860.584,52
Oktober	3.692.201,12	529.440,89	508.606,00	441.206,98	178.514,76	0,00	5.349.969,75
November	5.451.153,29	467.978,90	624.999,47	487.290,34	209.648,61	568,62	7.241.639,23
Dezember	5.730.940,87	535.467,33	927.439,82	683.147,52	425.355,71	153.888,79	8.456.240,04
2013	53.529.920,15	6.841.551,19	8.368.649,26	5.818.087,99	3.264.207,87	1.522.761,13	79.345.177,59

Abfertigungsbeträge

2012

	W, NÖ	OÖ	St	K	T	V	Ö
Jänner	5.194.842,05	857.302,33	1.086.560,13	606.230,59	488.747,88	238.887,46	8.472.570,44
Februar	4.853.463,02	845.621,04	974.893,99	488.021,63	571.669,94	219.810,99	7.953.480,61
März	3.071.194,72	590.649,28	532.537,28	747.442,34	401.599,72	148.487,33	5.491.910,67
April	2.537.058,59	415.846,31	700.751,06	594.712,23	448.257,26	135.874,50	4.832.499,95
Mai	3.779.372,84	719.907,36	799.126,55	685.078,08	323.774,66	173.510,82	6.480.770,31
Juni	3.091.765,81	537.485,09	778.723,35	376.361,33	268.342,69	109.838,99	5.162.517,26
Juli	4.051.415,22	701.221,88	655.749,04	431.760,07	151.911,25	183.041,32	6.175.098,78
August	3.462.231,22	663.621,66	679.282,25	431.113,45	296.684,37	63.092,92	5.596.025,87
September	3.472.255,48	565.616,37	537.627,76	626.678,59	131.283,61	174.718,08	5.508.179,89
Oktober	3.304.844,99	469.229,99	741.361,60	387.119,87	171.830,23	254.555,09	5.328.941,77
November	3.452.890,13	707.446,01	944.428,96	506.630,14	221.404,12	118.414,01	5.951.213,37
Dezember	4.244.188,97	473.057,40	939.783,97	455.497,28	287.588,62	104.160,95	6.504.277,19
2012	44.515.523,04	7.547.004,72	9.370.825,94	6.336.645,60	3.763.094,35	1.924.392,46	73.457.486,11

2011

	W, NÖ	OÖ	St	K	T	V	Ö
Jänner	6.801.627,78	825.346,02	1.083.606,46	834.708,55	463.779,53	159.440,65	10.168.508,99
Februar	4.990.000,78	831.864,39	797.840,10	743.645,08	402.875,24	193.702,98	7.959.928,57
März	4.172.479,49	740.985,40	981.892,11	820.989,84	329.296,07	246.918,70	7.292.561,61
April	3.116.964,20	591.557,69	600.985,32	315.474,93	281.917,17	196.840,34	5.103.739,65
Mai	4.324.901,21	581.328,40	705.228,35	666.447,75	400.530,51	306.220,94	6.984.657,16
Juni	3.780.381,96	498.933,24	598.489,27	451.938,70	242.273,57	152.734,35	5.724.751,09
Juli	3.309.786,91	709.595,90	865.446,27	413.508,35	319.439,94	257.628,19	5.875.405,56
August	4.239.523,58	779.621,37	979.043,14	464.615,42	303.833,89	145.431,68	6.912.069,08
September	3.469.031,78	587.891,15	671.195,23	492.284,59	214.611,04	271.079,56	5.706.093,35
Oktober	2.958.983,50	617.115,75	609.382,79	415.416,33	161.868,59	93.693,43	4.856.460,39
November	3.562.345,74	310.441,58	791.587,66	548.091,32	353.714,47	200.657,81	5.766.838,58
Dezember	5.712.365,12	890.924,48	759.970,57	817.575,16	445.921,54	327.655,68	8.954.412,55
2011	50.438.392,05	7.965.605,37	9.444.667,27	6.984.696,02	3.920.061,56	2.552.004,31	81.305.426,58

Abfertigungsbeträge

2010

	W, NÖ B	OÖ	St	K	T	V	Ö
Jänner	6.944.340,65	1.072.258,38	-420,96	712.677,57	546.090,51	139.835,97	9.414.782,12
Februar	5.988.396,63	828.379,63	0,00	871.877,52	325.697,94	208.098,02	8.222.449,74
März	6.005.641,54	834.353,20	0,00	747.881,63	779.142,01	261.173,91	8.628.192,29
April	4.521.342,96	817.475,11	0,00	789.609,96	466.173,37	150.953,35	6.745.554,75
Mai	4.029.732,26	702.351,84	7.237,02	522.723,32	402.992,53	254.208,96	5.919.245,93
Juni	4.816.629,69	458.839,55	0,00	520.011,89	334.130,95	191.382,12	6.320.994,20
Juli	3.673.114,24	552.921,05	0,00	689.325,14	254.845,21	218.087,87	5.388.293,51
August	3.714.937,93	693.606,13	0,00	667.554,58	299.694,62	123.071,30	5.498.864,56
September	3.992.639,70	768.783,72	0,00	409.831,41	386.985,79	213.156,78	5.771.397,40
Oktober	3.249.797,56	453.248,55	0,00	357.813,22	357.703,00	139.177,29	4.557.739,62
November	4.943.401,75	625.305,78	0,00	593.390,09	206.957,12	212.283,51	6.581.338,25
Dezember	6.105.841,14	933.271,73	894.446,25	853.019,78	561.418,31	149.780,26	9.497.777,47
2010	57.985.816,05	8.740.794,67	901.262,31	7.735.716,11	4.921.831,36	2.261.209,34	82.546.629,84

BB: Betriebsbetreuung
Mit Jänner 2010 wurde die Regionalstelle Ost in Betriebsbetreuung (BB) umbenannt. Die BB übernimmt die Agenden der ehemaligen Landesstellen Wien, Nö, Burgenland und Salzburg.

2009

	W, NÖ B	OÖ	St	K	S	T	V	Ö
Jänner	4.017.677,00	930.700,79	959.880,16	657.684,38	412.282,35	604.510,94	355.731,56	7.938.467,18
Februar	3.804.617,64	557.255,80	967.749,25	828.310,68	411.804,52	387.970,72	437.358,00	7.395.066,61
März	4.101.363,17	585.093,73	1.022.484,54	1.066.493,09	593.009,95	532.440,51	210.722,93	8.111.607,92
April	3.035.785,17	1.070.647,90	1.035.191,66	715.438,51	363.928,84	339.309,14	409.844,20	6.970.145,42
Mai	3.265.022,47	580.846,40	934.462,61	388.966,80	413.728,69	426.037,24	145.652,61	6.154.716,82
Juni	4.585.975,70	632.461,01	641.193,38	581.560,79	385.421,78	342.251,54	268.279,22	7.437.143,42
Juli	3.270.560,96	580.853,96	632.434,13	630.284,53	348.694,04	423.208,28	78.567,89	5.964.603,79
August	2.699.040,60	753.946,08	650.462,86	409.405,78	281.466,19	414.385,56	221.007,71	5.429.714,78
September	3.554.982,05	622.228,37	739.539,73	464.802,84	270.440,97	463.756,04	363.235,27	6.478.985,27
Oktober	2.800.468,21	458.987,08	711.226,81	430.778,59	301.584,59	315.490,36	181.538,64	5.200.074,28
November	3.809.410,03	732.934,40	626.219,57	227.593,20	283.976,35	370.107,43	250.762,53	6.301.003,51
Dezember	5.495.631,65	804.943,81	131.181,49	690.165,03	429.521,13	687.600,87	315.243,68	8.554.287,66
2009	44.440.534,65	8.310.899,33	9.052.026,19	7.091.484,22	4.495.859,40	5.307.068,63	3.237.944,24	81.935.816,66

Abfertigungsbeträge

2008

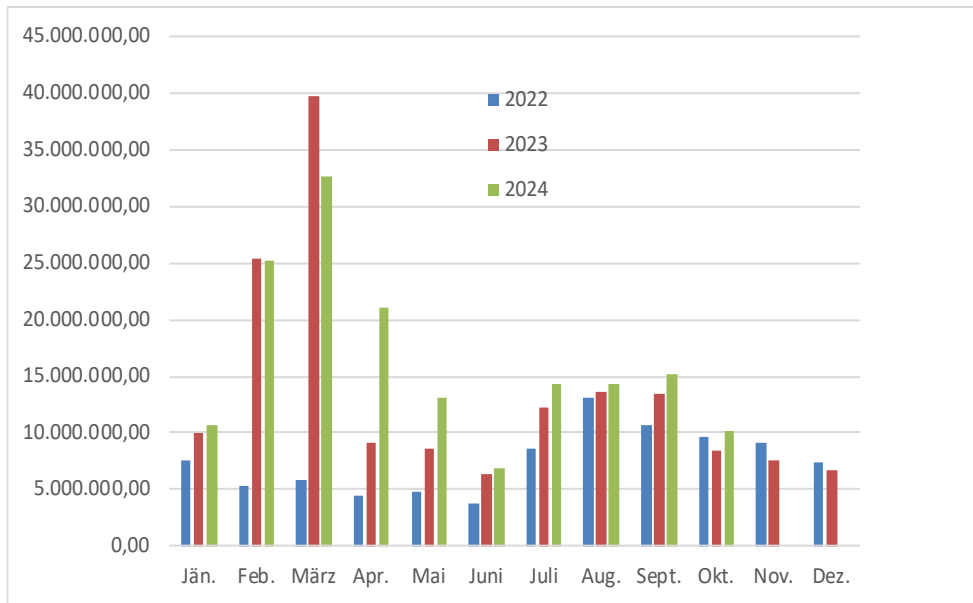
	W, NÖ B	OÖ	St	K	S	T	V	Ö
Jänner	5.206.467,85	1.091.311,24	1.491.283,74	987.921,56	633.172,12	749.815,02	531.466,43	10.691.437,96
Februar	3.063.820,62	1.052.496,48	853.158,20	524.421,52	419.799,92	611.479,95	500.235,37	7.025.412,06
März	2.736.752,78	796.977,16	1.155.740,22	615.538,71	301.215,95	589.553,67	267.051,19	6.462.829,68
April	2.951.039,62	522.813,38	900.083,57	492.336,08	368.522,93	423.512,84	509.882,92	6.168.191,34
Mai	2.388.557,64	996.416,07	976.856,05	447.558,22	217.937,03	355.077,42	208.122,12	5.590.524,55
Juni	3.358.009,18	896.894,06	956.589,64	643.761,11	316.215,23	373.810,16	325.878,65	6.871.158,03
Juli	2.408.800,68	625.947,22	691.669,83	415.695,41	200.027,14	252.247,23	142.199,09	4.736.586,60
August	2.648.627,02	490.550,20	812.680,55	436.247,79	199.878,29	375.580,76	196.299,08	5.159.863,69
September	2.820.551,73	561.571,78	715.644,53	450.585,28	345.441,42	483.825,32	241.155,57	5.618.775,63
Oktober	3.056.222,39	842.160,55	875.248,68	301.742,98	279.579,00	390.085,50	150.884,16	5.895.923,26
November	2.891.989,18	813.533,86	697.190,29	373.429,90	195.835,24	442.701,73	294.474,85	5.709.155,05
Dezember	4.335.808,20	977.030,15	1.151.429,50	651.538,24	471.154,43	479.253,36	309.571,39	8.375.785,27
2008	37.866.646,89	9.667.702,15	11.277.574,80	6.340.776,80	3.948.778,70	5.526.942,96	3.677.220,82	78.305.643,12

2007

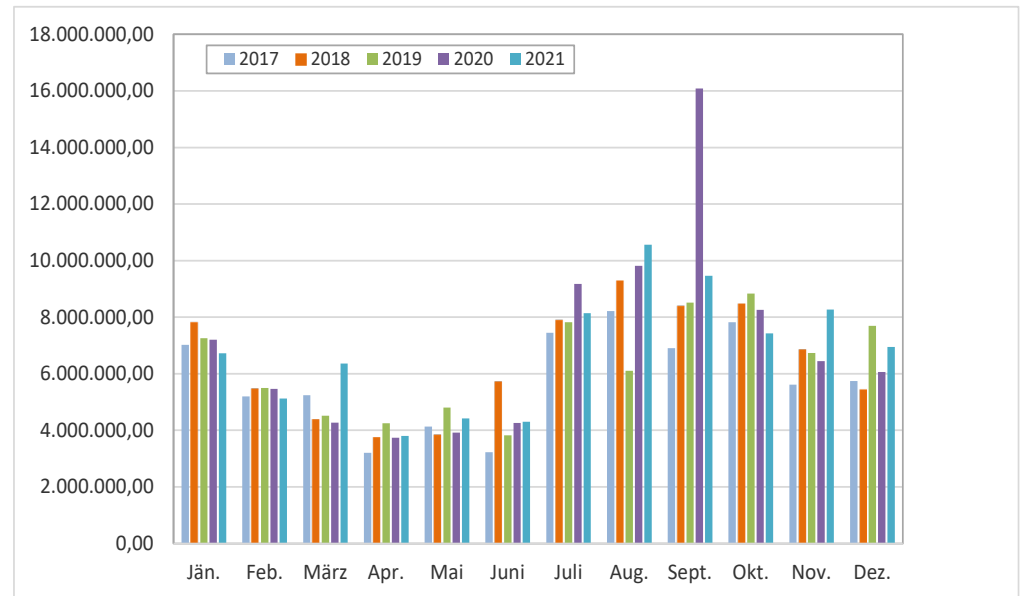
	W, B	Nö	Oö	St	K	S	T	V	Ö
Jänner	3.141.605,16	1.856.397,54	1.352.003,49	2.588.724,36	929.718,36	677.544,64	797.750,04	353.071,00	11.696.814,59
Februar	1.556.644,32	710.238,34	947.179,83	1.007.361,23	404.023,13	490.691,09	507.946,03	279.730,02	5.903.813,99
März	1.445.988,58	640.953,79	684.591,93	973.304,48	418.473,95	337.515,46	667.446,90	167.563,27	5.335.838,36
April	1.253.728,86	807.504,83	644.771,98	644.569,00	411.814,90	144.009,21	506.645,27	251.999,46	4.665.043,51
Mai	1.270.331,79	874.225,06	559.791,20	830.090,84	592.624,38	271.487,70	511.876,26	169.718,82	5.080.146,05
Juni	1.397.762,88	581.645,04	599.326,27	565.374,12	529.894,66	385.954,41	347.410,82	316.184,58	4.723.552,78
Juli	1.300.788,32	704.535,74	572.726,55	1.264.148,03	740.501,30	364.176,30	404.771,79	243.833,89	5.595.481,92
August	1.119.793,42	709.806,57	639.377,76	736.079,62	483.916,05	447.985,03	427.058,45	163.200,17	4.727.217,07
September	1.083.784,81	562.620,53	657.874,40	548.375,81	331.137,55	303.242,27	349.101,59	176.341,14	4.012.478,10
Oktober	1.896.712,94	853.794,75	1.223.483,58	744.749,28	517.800,86	466.266,23	597.187,84	323.223,46	6.623.218,94
November	1.598.021,23	892.558,44	871.924,02	831.518,11	350.504,50	392.077,36	365.600,21	190.360,17	5.492.564,04
Dezember	2.268.072,59	1.182.131,87	1.001.992,13	1.159.041,86	411.044,94	560.895,54	809.860,66	214.105,55	7.607.145,14
2007	19.333.234,90	10.376.412,50	9.755.043,14	11.893.336,74	6.121.454,58	4.841.845,24	6.292.655,86	2.849.331,53	71.463.314,49

Abfertigungsbeträge

2022 - 2024

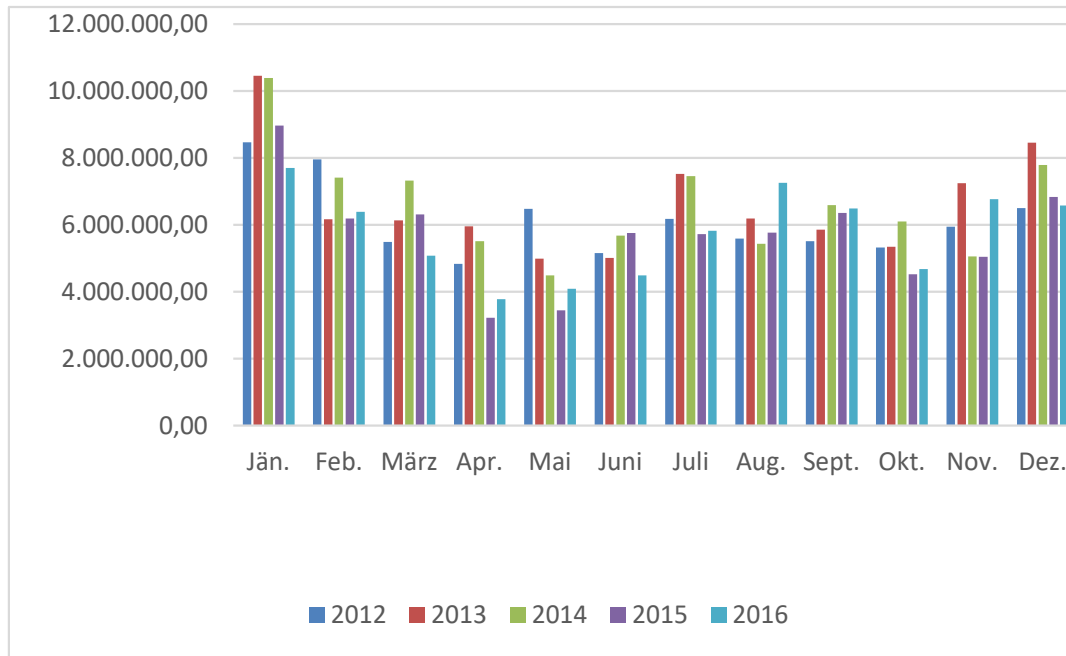


2017 - 2021



Abfertigungsbeträge

2012 - 2016



2007 - 2011

