

Abfindungen nach Beträgen

	2022	2023	2024	2025	2026	
Jänner	2.827.962,00	3.248.587,56	3.450.164,04	3.385.545,10	3.237.443,21	
Februar	2.478.615,30	2.931.886,35	3.726.856,22	2.963.435,80	3.416.814,54	
März	4.748.094,80	5.719.248,05	5.576.742,95	5.769.977,55	7.762.487,42	
April	4.052.156,98	4.368.652,70	5.977.918,26	5.062.926,93		
Mai	3.769.429,33	4.310.035,11	4.358.395,08	3.504.580,86		
Juni	3.822.758,42	4.177.581,67	3.868.755,64	4.128.573,26		
Juli	3.868.539,67	4.136.616,62	4.901.480,39	4.592.054,38		
August	2.819.182,30	2.947.599,86	2.765.938,85	2.489.898,36		
September	2.118.116,15	2.375.978,46	2.637.611,74	2.508.524,18		
Oktober	2.666.404,39	3.083.997,62	2.980.004,31	3.095.168,94		
November	2.894.679,80	2.484.065,13	2.406.801,56	2.841.793,34		
Dezember	2.631.088,35	2.785.157,51	3.117.676,22	2.790.438,82		
Gesamt	38.697.027,49	42.569.406,64	45.768.345,26	43.132.917,52	14.416.745,17	

	2016	2017	2018	2019	2020	2021
Jänner	1.987.678,71	2.484.697,11	2.707.088,99	2.462.736,99	2.766.145,10	2.456.882,23
Februar	3.039.372,75	2.560.557,06	2.664.103,07	2.580.347,95	3.038.089,80	2.856.141,50
März	3.895.124,81	4.107.982,20	4.479.790,79	4.086.640,54	4.939.578,09	5.487.158,76
April	2.734.871,96	2.402.269,37	2.973.768,92	3.365.209,69	3.372.165,12	4.070.497,81
Mai	2.422.679,01	2.425.828,07	2.788.350,22	3.317.830,38	2.709.786,85	2.964.608,32
Juni	3.674.044,84	3.100.622,24	3.867.002,42	3.733.565,82	3.448.388,66	2.922.512,37
Juli	3.173.665,16	3.155.239,13	3.598.345,33	4.750.251,12	3.909.966,39	3.294.286,06
August	2.293.405,89	2.084.786,00	2.754.195,16	2.513.188,05	2.480.030,87	1.935.606,12
September	1.746.907,68	1.551.176,82	1.586.321,35	1.888.228,81	2.461.731,64	1.920.839,99
Oktober	2.309.009,18	2.541.771,82	2.862.729,01	3.005.356,52	2.433.083,55	2.197.329,38
November	1.412.948,72	2.208.351,57	2.284.901,80	2.312.436,74	2.033.085,98	2.506.551,48
Dezember	2.940.192,49	2.179.191,40	2.277.749,80	2.487.774,54	2.048.832,74	2.671.301,74
Gesamt	31.629.901,20	30.802.472,79	34.844.346,86	36.503.567,15	35.640.884,79	35.283.715,76

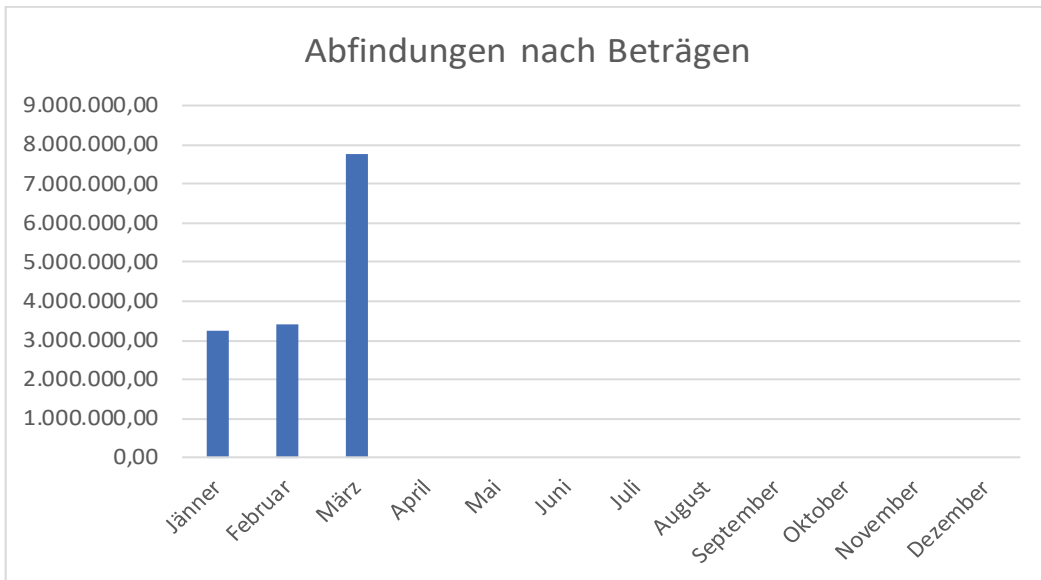
Abfindungen nach Beträgen

	2010	2011	2012	2013	2014	2015
Jänner	4.059.166,02	4.196.765,84	4.429.621,03	3.488.866,78	4.518.171,29	2.789.340,08
Februar	3.394.796,89	3.809.265,83	3.821.666,85	3.774.099,71	3.980.225,88	2.653.324,31
März	4.358.295,20	4.545.397,36	3.920.773,86	4.253.473,88	4.480.496,32	4.025.144,55
April	5.925.446,64	5.657.194,34	5.721.486,77	4.851.827,18	5.204.723,70	3.218.476,88
Mai	5.060.372,61	5.683.522,22	5.336.112,73	4.485.010,36	4.833.311,47	2.609.256,52
Juni	7.205.426,93	7.494.038,72	6.427.183,76	5.931.936,73	6.247.783,79	4.661.350,96
Juli	5.388.109,93	5.264.191,76	4.476.876,05	4.706.638,05	5.459.879,81	4.311.767,72
August	3.328.691,41	3.931.096,04	3.480.460,85	3.265.447,49	3.123.685,35	2.203.147,80
September	4.131.810,84	3.260.722,74	2.197.145,56	2.408.061,22	2.994.238,34	2.042.833,12
Oktober	3.416.280,66	4.164.302,58	3.571.050,20	3.452.110,42	3.824.215,07	2.559.817,10
November	3.996.451,67	3.996.877,14	2.941.965,27	2.968.414,77	3.105.663,49	2.298.679,62
Dezember	3.833.403,79	3.741.941,02	2.509.286,53	2.764.694,05	3.692.208,38	2.114.199,30
Gesamt	54.098.252,59	55.745.315,59	48.833.629,46	46.350.580,64	51.464.602,89	35.487.337,96

	2004	2005	2006	2007	2008	2009
Jänner	4.043.823,58	3.168.226,26	2.975.745,30	4.087.819,00	4.116.652,89	4.224.649,41
Februar	3.105.846,53	2.902.215,10	2.498.212,63	3.303.659,78	4.068.394,88	3.496.709,22
März	3.970.025,84	3.504.973,64	2.969.060,12	4.983.294,03	3.754.356,68	4.353.188,30
April	5.000.495,08	4.483.710,78	3.451.769,39	4.986.069,36	5.603.528,18	5.851.561,89
Mai	4.974.043,26	4.234.606,12	5.534.466,27	5.014.381,16	5.264.850,16	5.925.688,82
Juni	6.755.699,07	6.785.208,29	439.606,80	6.643.041,33	6.711.684,75	7.797.999,77
Juli	4.741.003,61	3.744.713,18	6.041.039,12	5.625.117,93	4.907.947,69	6.081.758,18
August	2.971.252,33	2.880.900,27	3.055.962,41	3.054.221,34	3.299.862,21	3.302.580,94
September	4.124.576,16	3.951.521,35	3.012.237,85	3.709.243,20	4.593.480,55	4.978.359,39
Oktober	3.106.014,34	2.816.386,18	3.201.343,36	4.530.663,09	4.105.505,19	3.675.661,96
November	3.476.281,74	3.116.807,25	3.324.355,73	3.608.154,35	3.772.647,43	3.419.255,76
Dezember	3.271.483,89	3.099.654,45	2.952.977,51	3.341.794,55	3.604.420,26	3.067.820,18
Gesamt	49.540.545,43	44.688.922,87	39.456.776,49	52.887.459,12	53.803.330,87	56.175.233,82

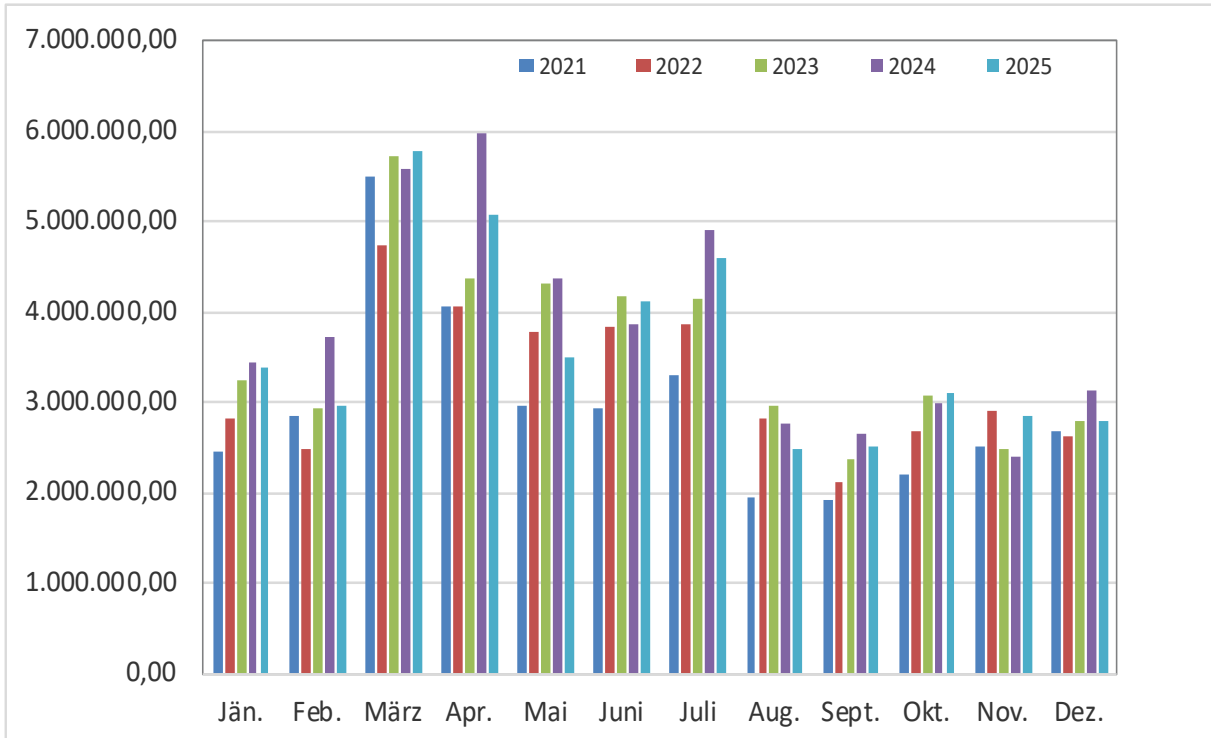
Abfindungen nach Beträgen

2026

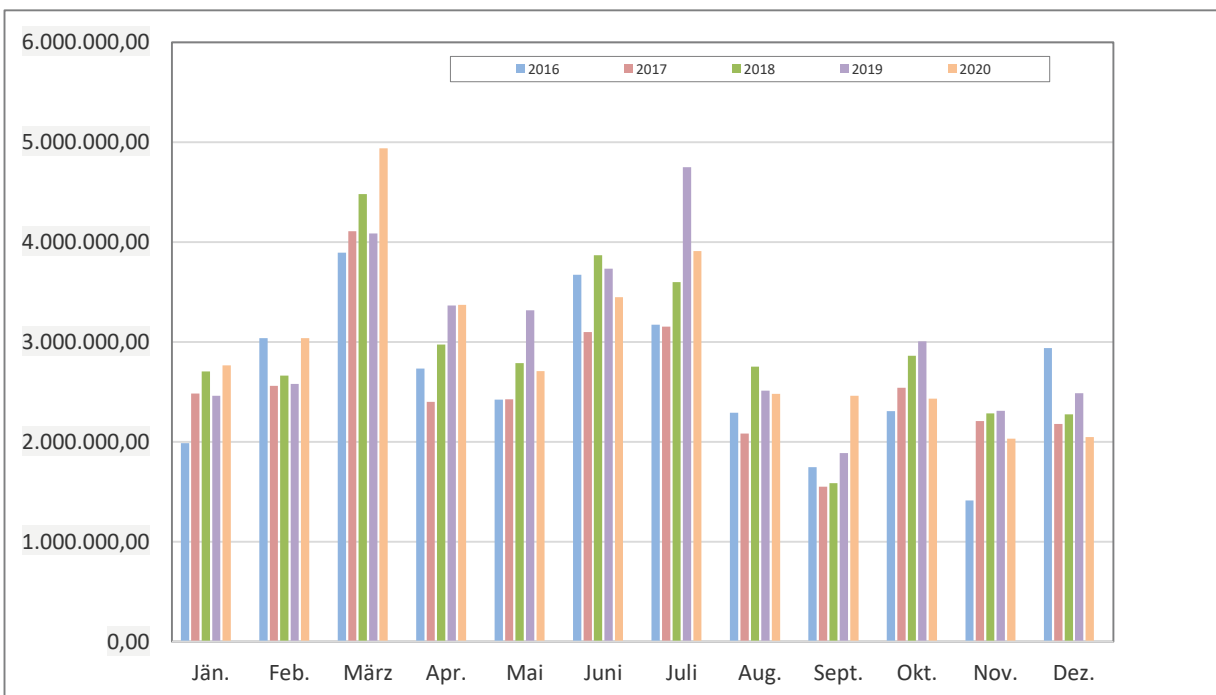


Abfindungen nach Beträgen

2021- 2025

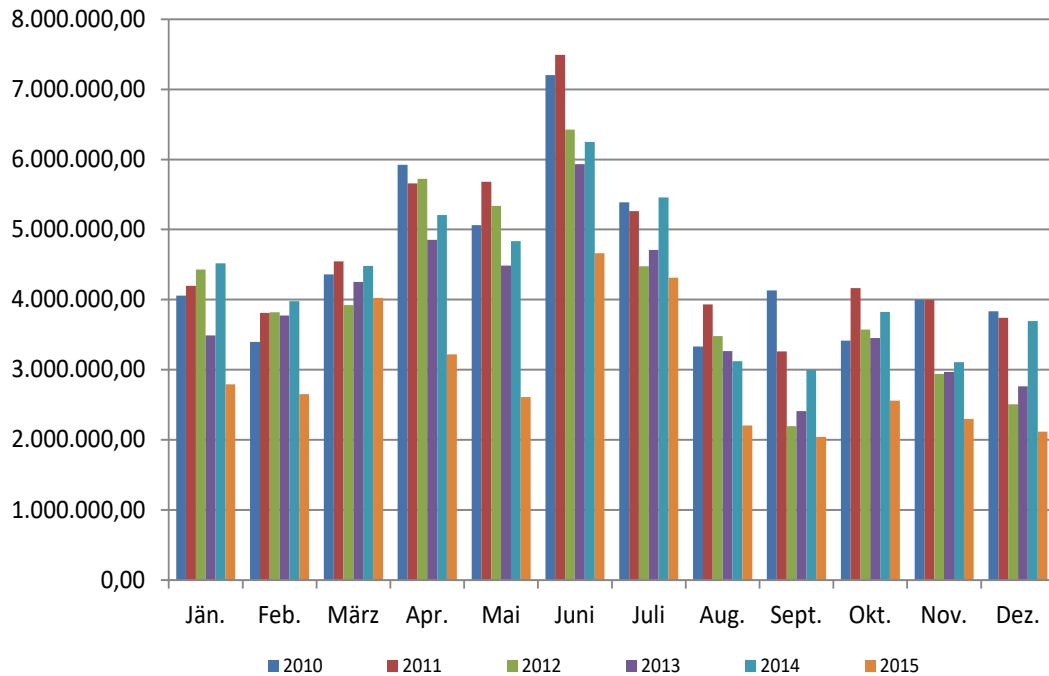


2016 - 2020

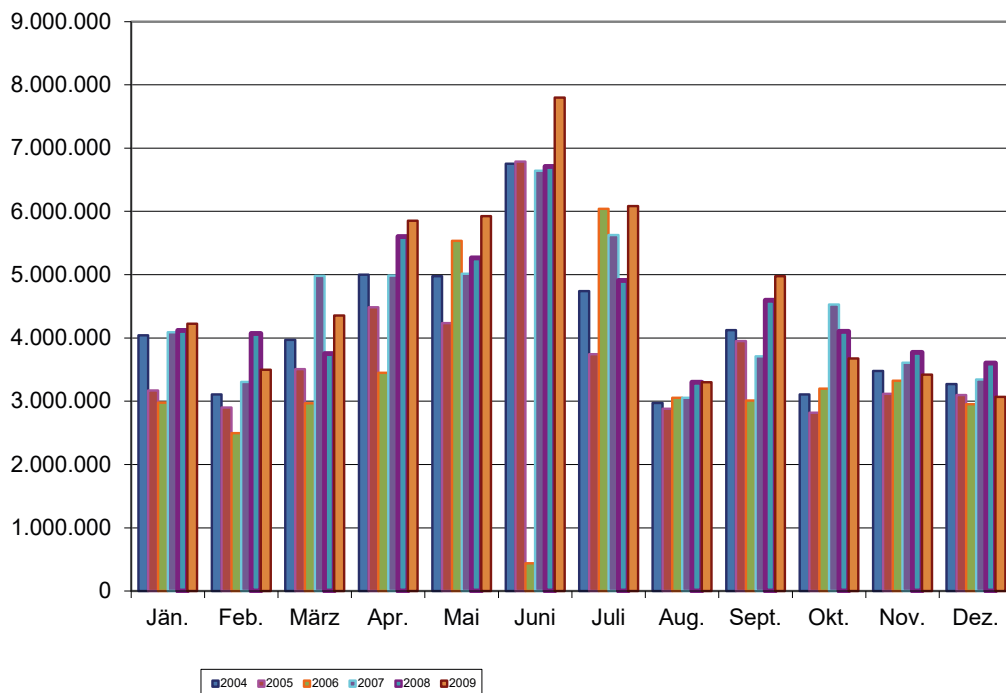


Abfindungen nach Beträgen

2010 - 2015



2004 - 2009



Anmerkung: Im Juni 2006 konnten wegen der Umstellung auf eBUAK erst gegen Monatsende Abfindungen verrechnet werden.